

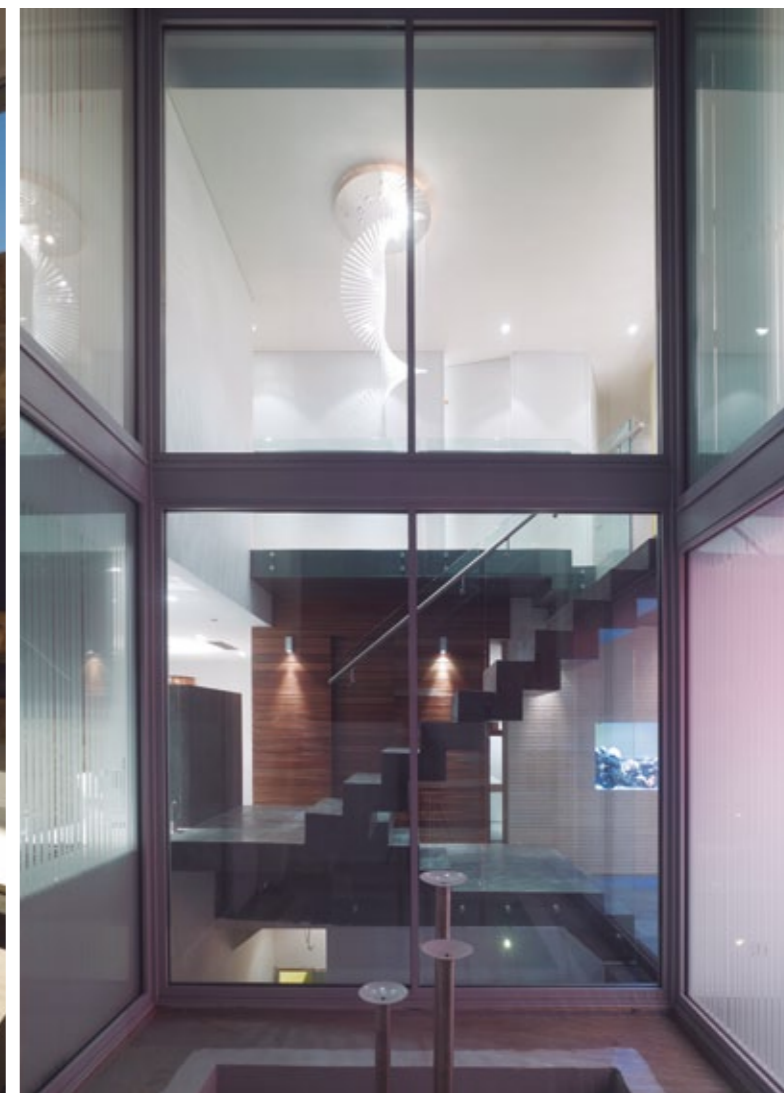
# 比尔的宅子 BILL'S HOUSE

Design corporation: Tony Owen Partners  
Location: Australia  
Area: 500 m<sup>2</sup>



This house was designed for a client in Sydney's inner west. The client is a concrete contractor who planned to build the house himself. As a result the house was designed to make maximum use of concrete and solid construction. Because of the client's heritage, the design was influenced by the materials and forms of Mediterranean Architecture. The curved shell forms reflect the sails of the fishing boats from the Greek Islands. In addition the client did a lot of entertaining and wanted a house which maximized the connection to a

large outdoor space. The house has an 'L-shaped' configuration to maximize the solar aspect for the living spaces. There is also a central courtyard to the west which allows for light to penetrate the middle of the house and also serves to break up the massing of the façade. The dominant feature of the house is the curved sail like rear white walls. These walls soften the massing and bring a lightness to the house. The walls break up the space progressively.

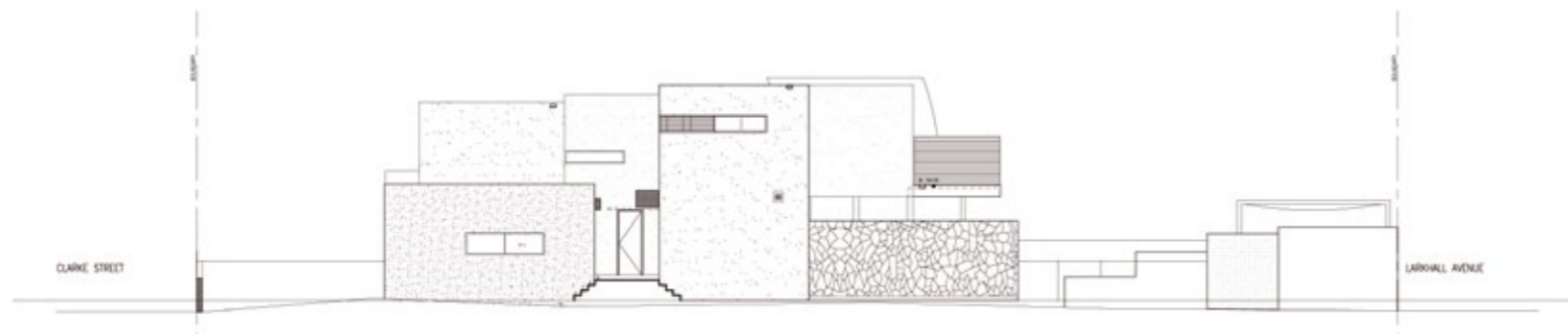




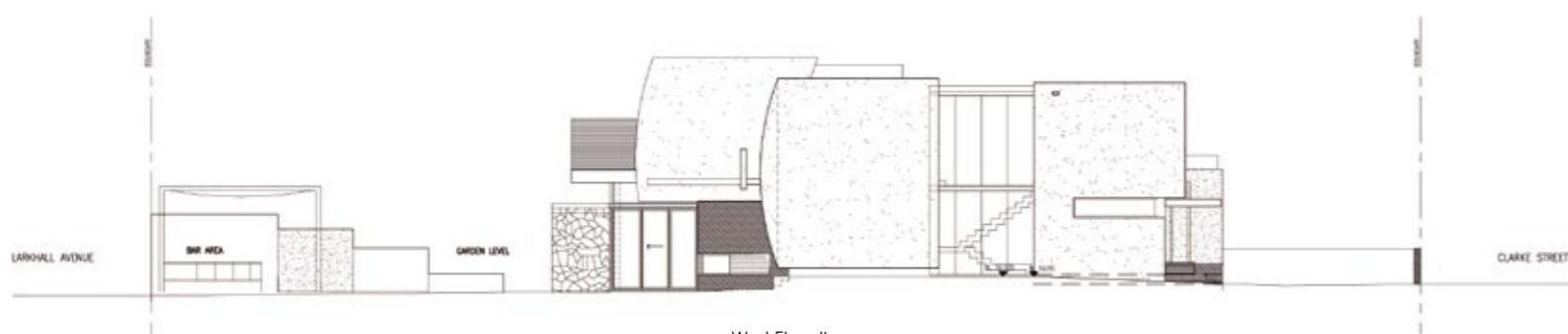
Ground Floor Plan



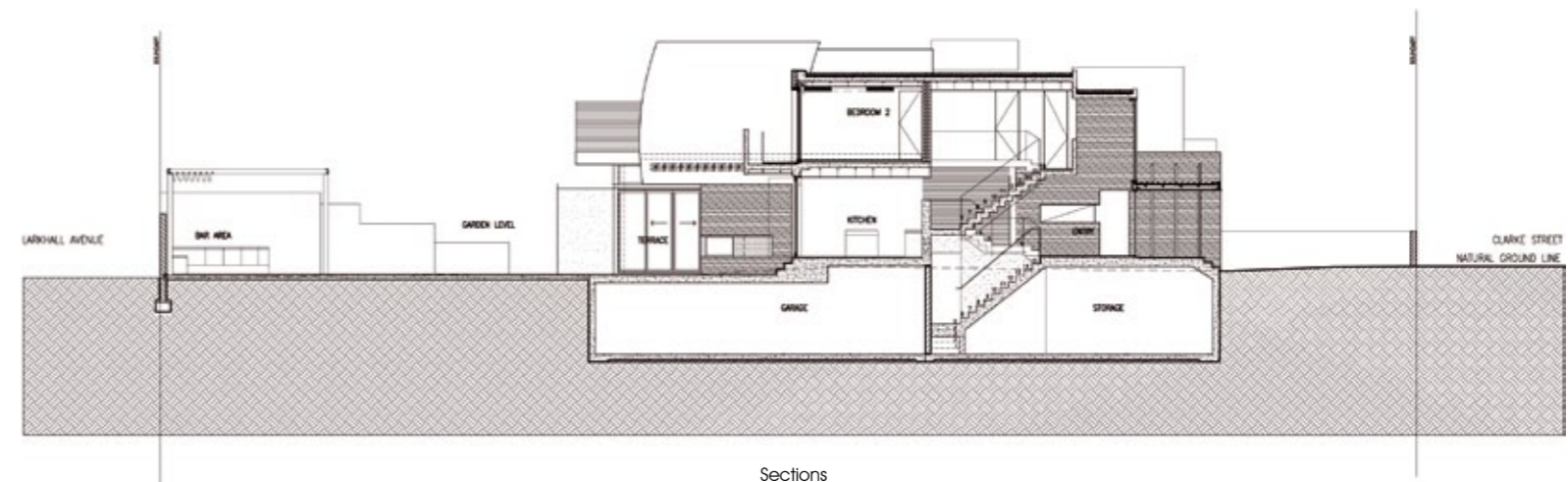
First Floor Plan



East Elevation



West Elevation



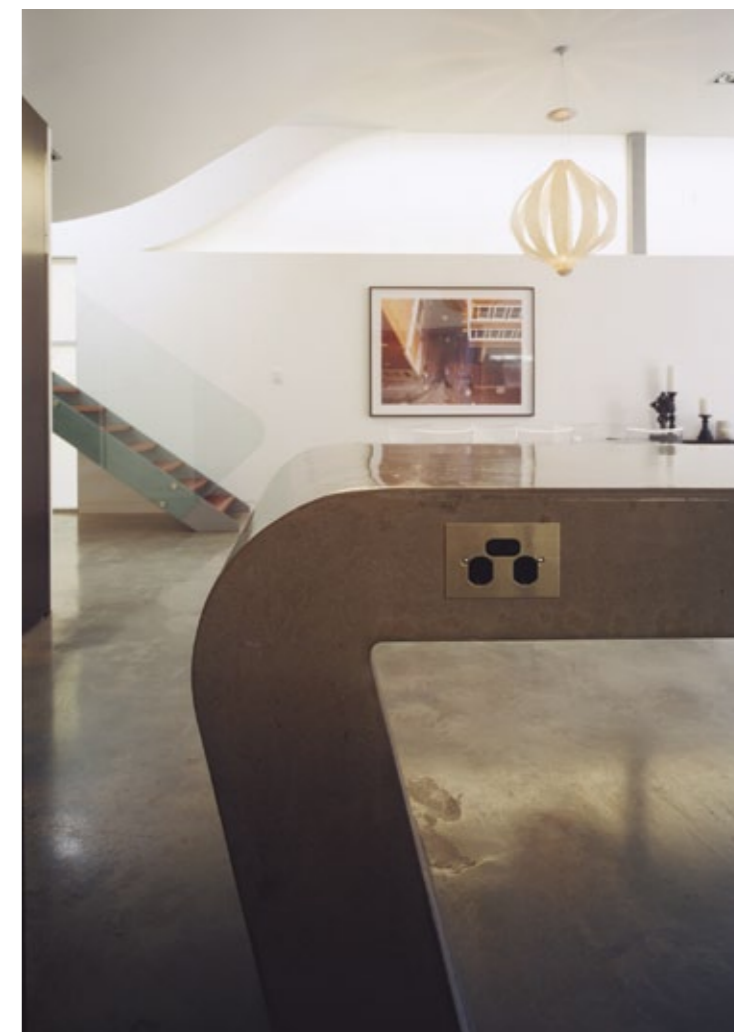
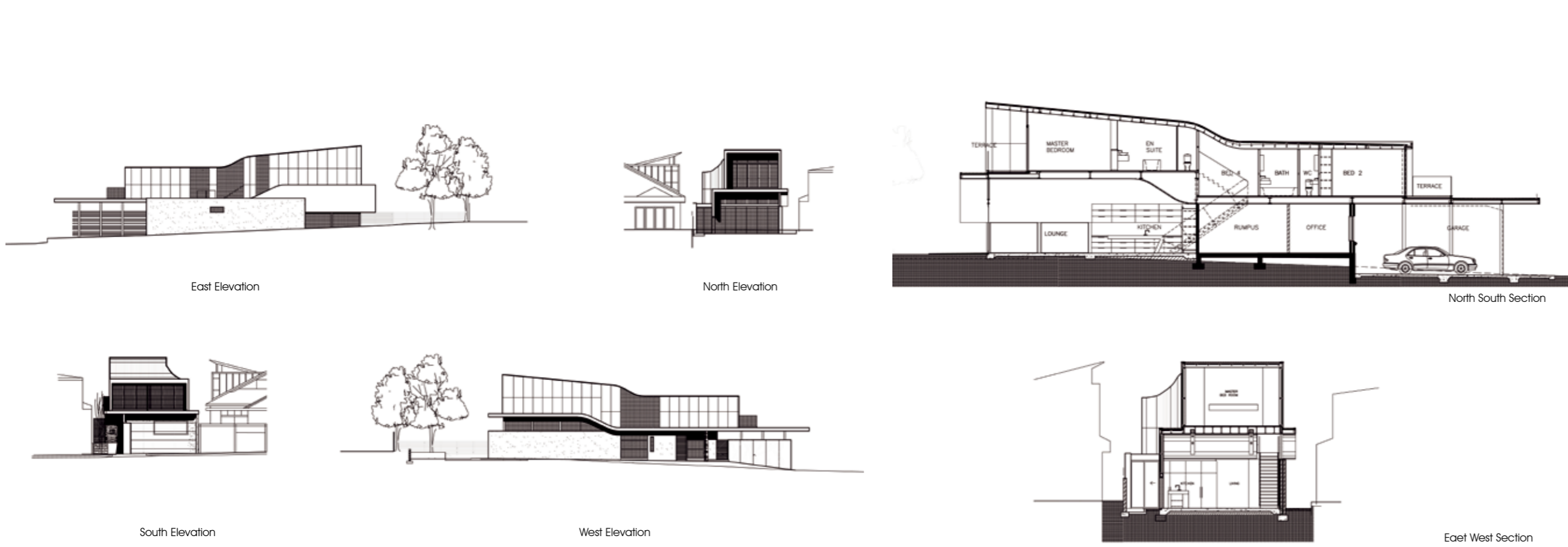
Sections

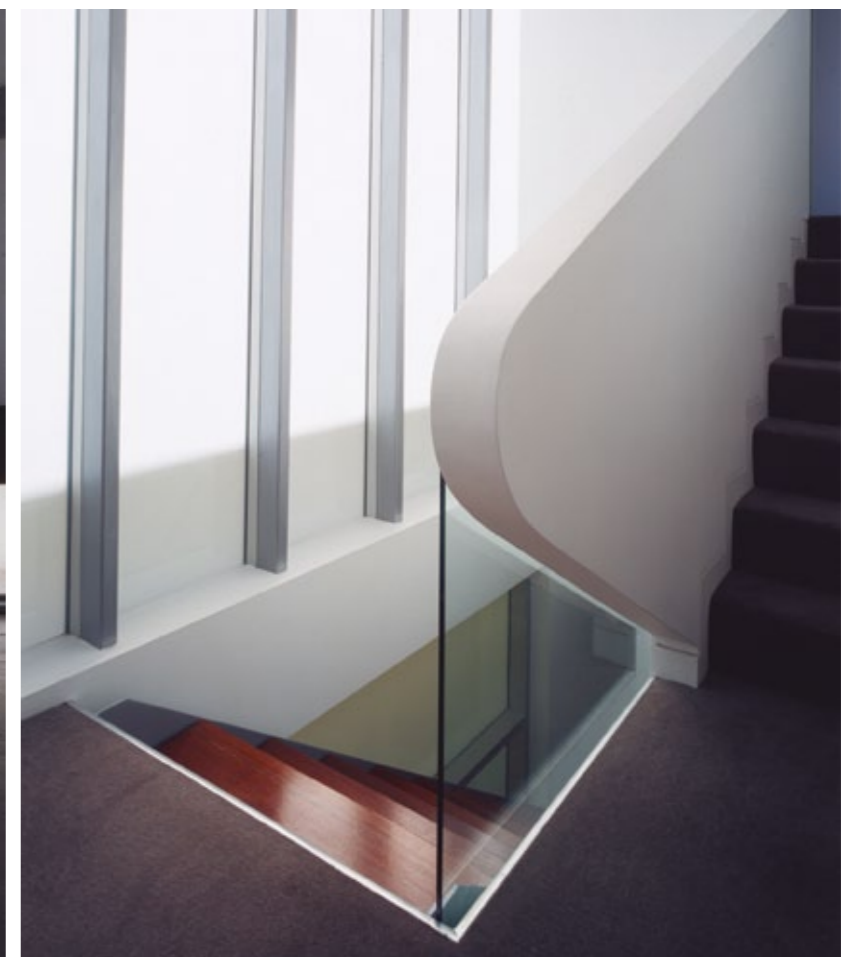
# BONDI 波宅 BONDI WAVE HOUSE

Design corporation: Tony Owen Partners  
Location: Bondi, Australia  
Area: 275 m<sup>2</sup>



The house is located in Brighton Boulevard; one simple capture the spirit of Bondi in a home which is both a beach house and a stylish urban dwelling. The inspiration for this house comes as much the culture in the surrounding streets as it does the beach itself. The line of the wave is the unifying element which runs all the way through the house. It forms an entry wing over the garage at the south and rises to give greater height to the living room at the north end. In between, the ceiling curves overhead at the main stair in the centre where the lower and upper levels fold into one another. The wave re-emerges in the kitchen in the form of a single poured cantilevered concrete island bench. This island bench forms the center piece of the living area, and it is the only cantilevered concrete bench on an obtuse angle with curved geometry.





# MOEBIUS 別墅 MOEBIUS HOUSE

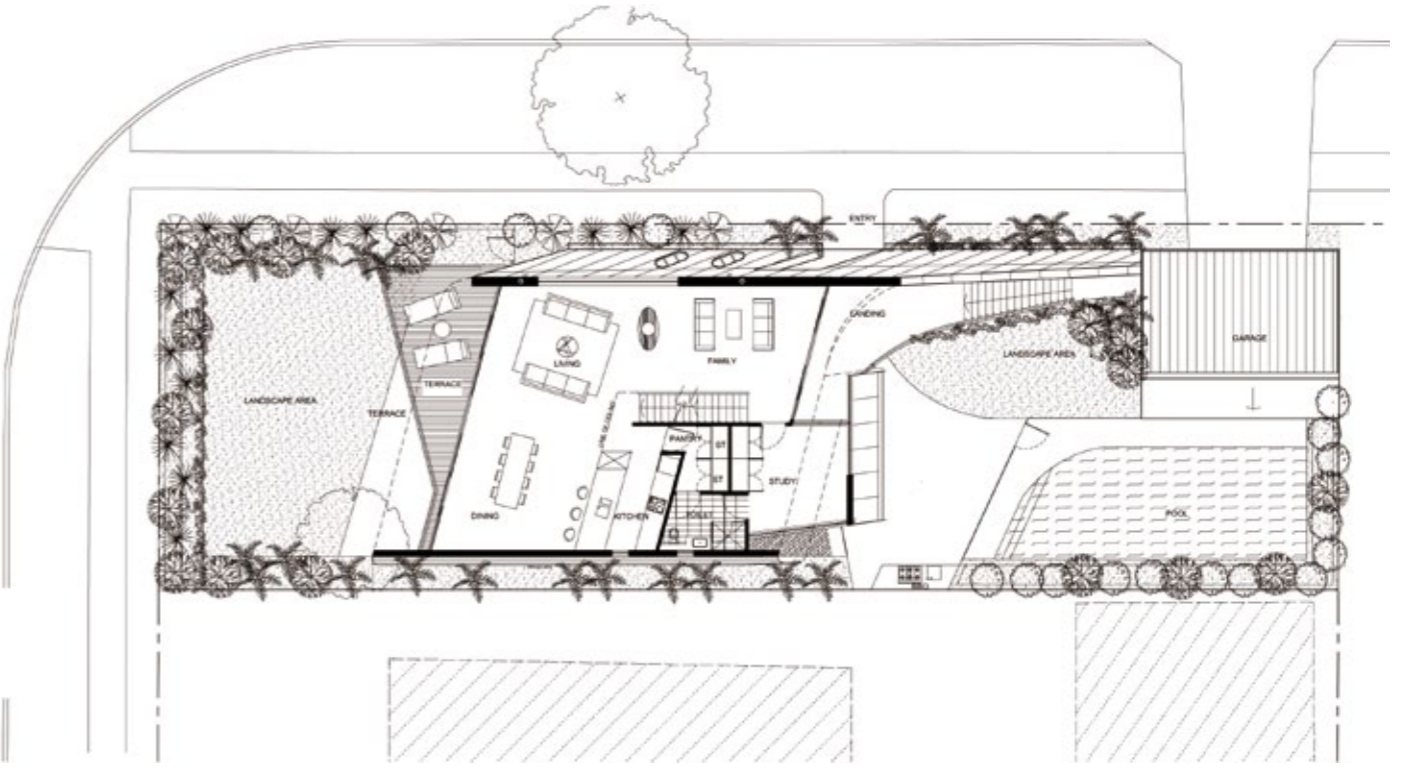
Design corporation: Tony Owen Plnrs  
Design team: Tony Owen, Sumir Diwan, Joseph Fok, Lawrence Loh, Mansia Lam  
Location: Sydney, Australia



This family house faces onto views of the Sydney Opera House and Harbour Bridge. The house explores the maximization of light, spaces, ventilations and views on a tight sight. We are exploring a more environmentally sensitive form of design called 'micro design'. Micro design utilises parametric modelling software which can respond to very small changes to design input criteria. In this case issues such as maximizing ventilations, views and efficiency of structure and minimizing impacts to neighbour views and overshadowing were the key

design criteria. We started by responding to the site with a series of movements which folded and twisted the space in order to maximise the changes of level, view opportunities and potential for connectivity to outside spaces at various ground planes. We created a dynamic model capable of responding to changes in these variables and allowed the models to run in real time. We then stopped the model when we felt we had a model which satisfied our concerns.

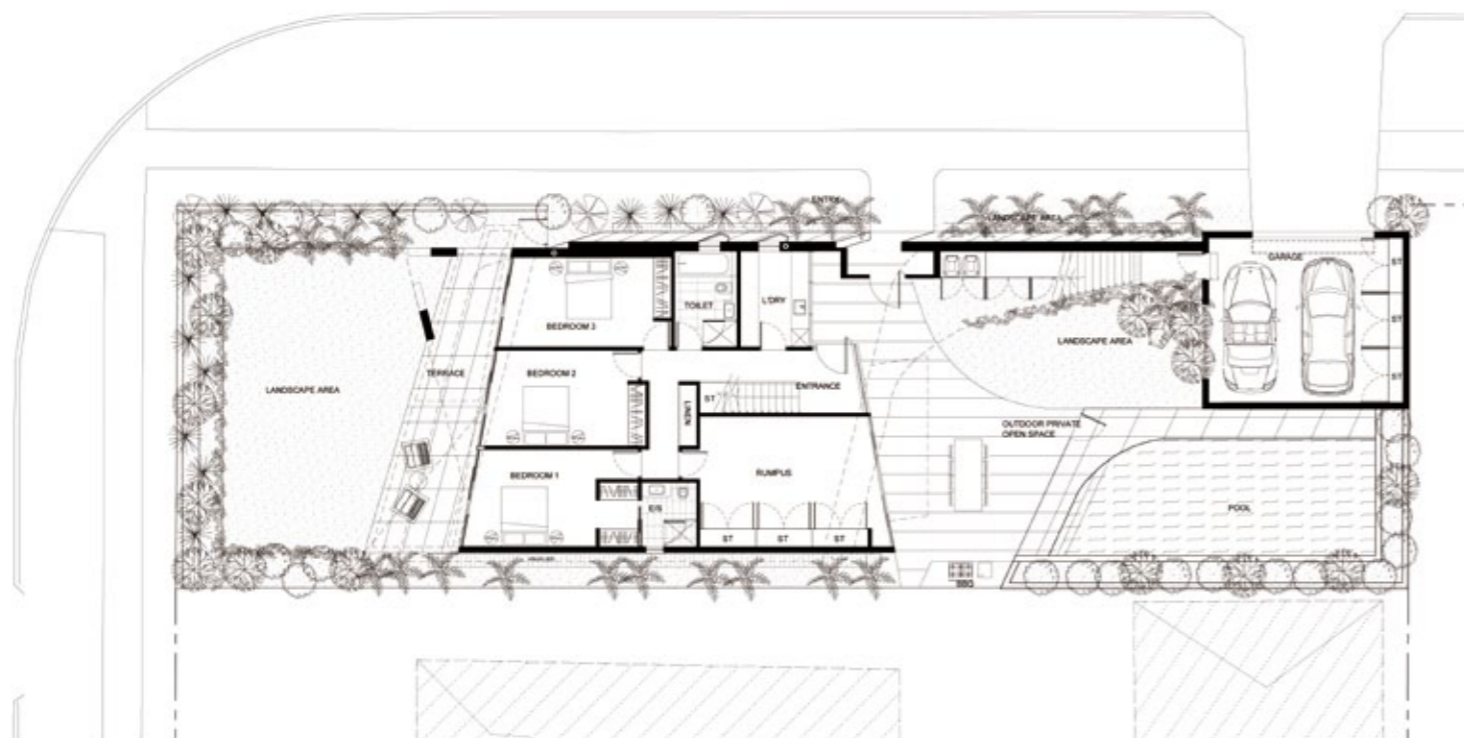
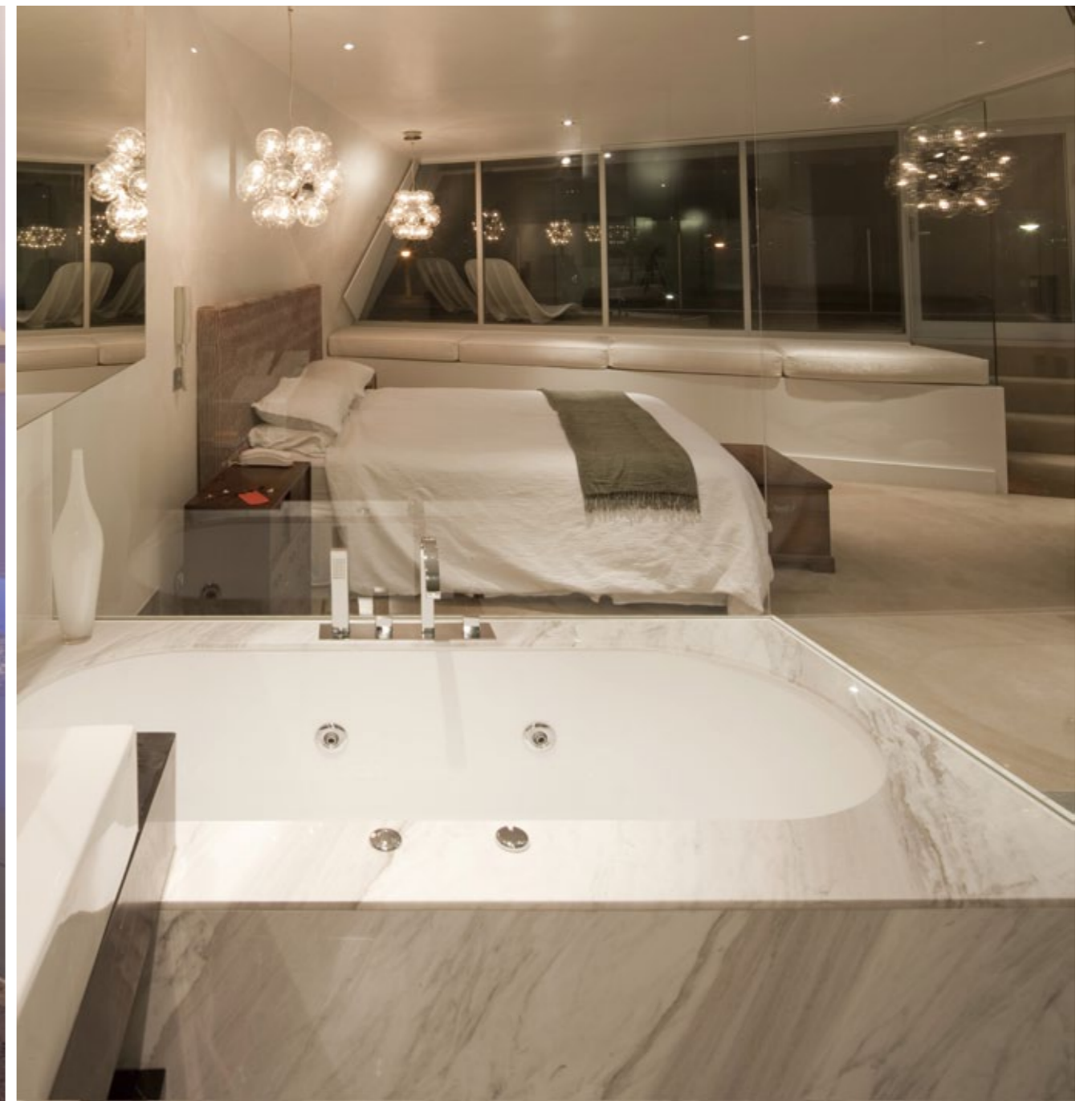




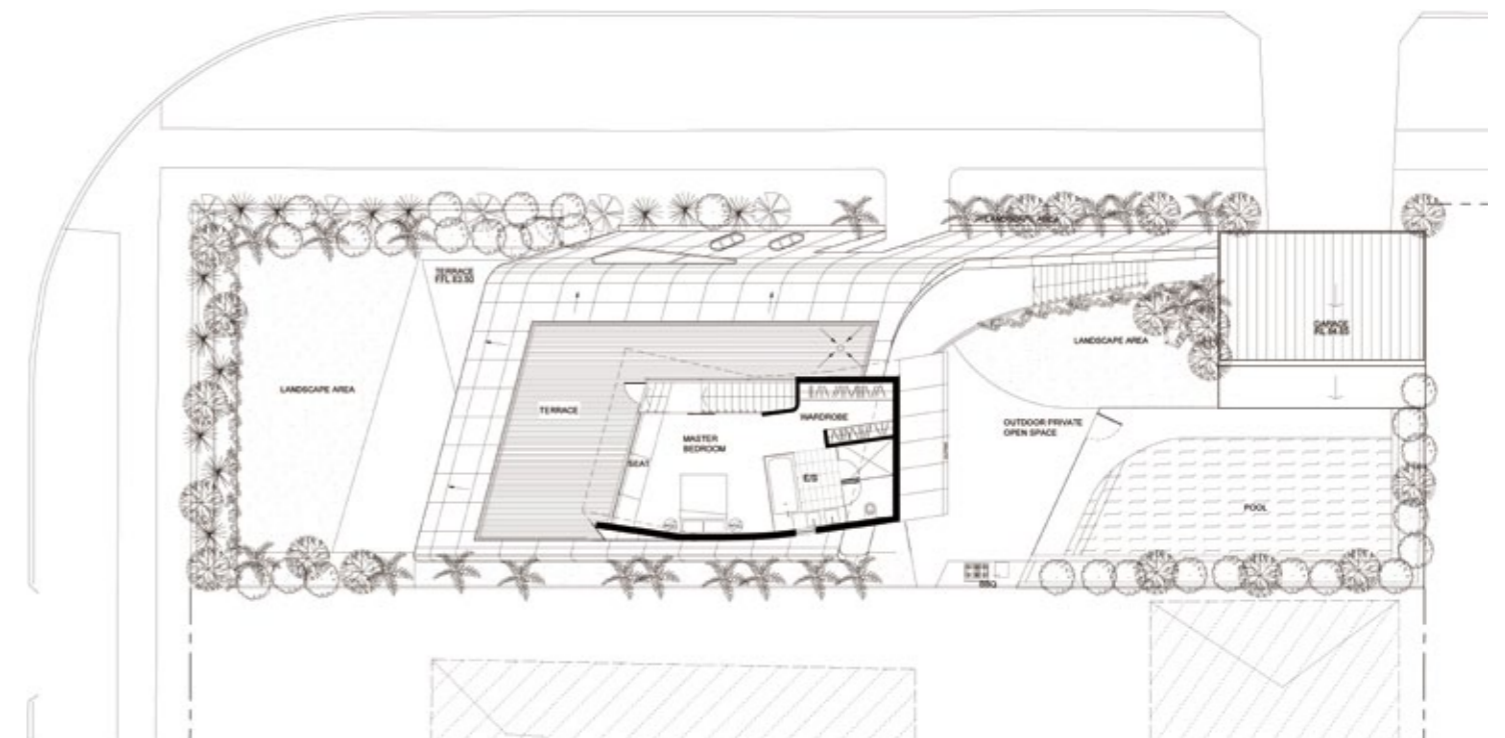
First Floor Plan







Ground Floor Plan



Second Floor Plan

